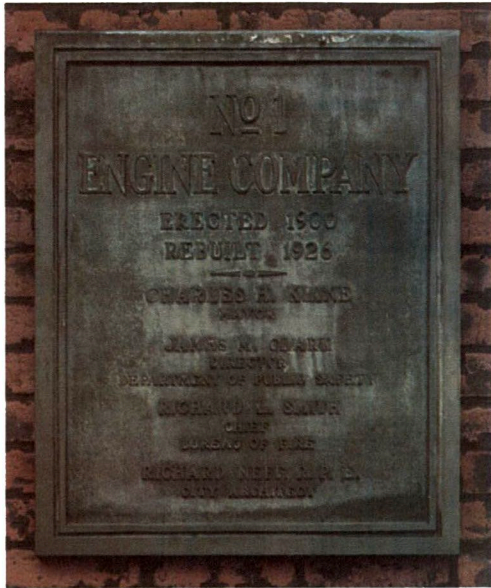
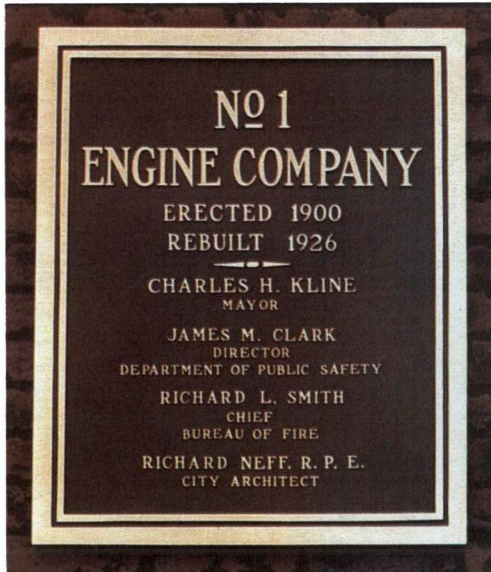


Resurfacing Kit

for bronze plaques



After



Contents

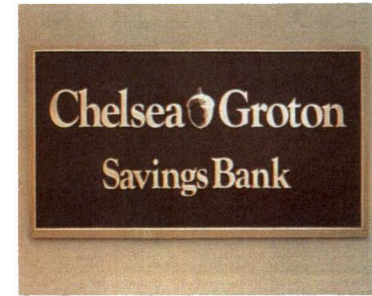
This kit contains the following items:

- 1 pt. M-1 Dissolver
- 1 pt. Rinse Aid
- 1 12¼ oz. Can Aerosol Color
- 1 12¼ oz. Can Aerosol Final Finish
- 1 No. 1 Tampico Brush
- 1 No. 12 Brass Brush
- 1 Roll Foundation Masking Tape
- 1 Sheet Emery Paper
- 1 Instruction Brochure

This kit will resurface approximately eight square feet of area.



Warning: Contents Flammable. Keep away from heat or flame. Keep out of reach of children.



Cast Plaques



Cast Metal Letters



Interior Signage

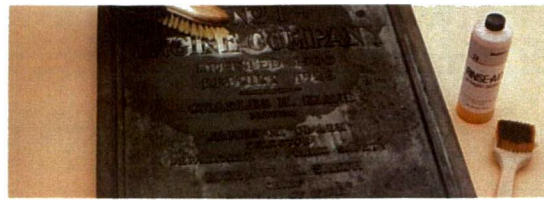


Exterior Signage

Work Area Preparation

For ease of resurfacing, the plaque should be removed, when possible, from the wall and resurfaced horizontally on a work bench or on the floor.

The cleaners will soften and destroy paint and varnish. Protect the work surface with several thicknesses of newspaper or a plastic drop cloth. When removal of plaque is not practical, the wall surface around the plaque should be masked and the floor protected. To protect hands and eyes, use rubber gloves and wear safety glasses. The work area should be well ventilated to avoid inhalation of vapors. For best results the surface temperature of the plaque should be between 60° and 90° Fahrenheit.



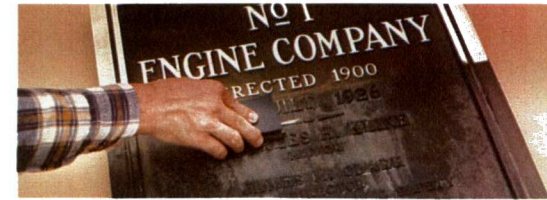
1. Plaque Surface Preparation

If any lacquer-like protective coating remains on the surface of the plaque, use M-1 Dissolver to remove. Apply with the tampico brush. Cleanse plaque with Rinse Aid after using M-1 Dissolver.

Note: Save at least ¼ can of the M-1 Dissolver to be used later in the final highlighting step.

If no protective coating is present, which is the case with many plaques 10 years and older, a wash with Matthews Rinse Aid is all that is necessary to prepare the surface.

Follow mixing instructions on the Rinse Aid label. Apply the Rinse Aid with the Tampico brush to remove loose surface grime, oil or wax. Rinse with clear water and then dry. Drying may be aided by blotting excess water with an absorbent lint free cloth or paper towel.



2. Initial Highlighting

Highlighting removes surface oxidation and exposes the natural color of the bronze. It is not necessary to highlight the entire plaque, only the raised surfaces such as letter faces, borders and ornamental decor.

Wrap the emery paper around a wood block and rub the face of flat letters in an even left and right motion. This will produce an even horizontal satin grain finish on the face of the letters. The same procedure should be followed on flat borders. To highlight rounded, raised or irregularly contoured surfaces such as borders and emblems, both the brass brush and the emery paper, wrapped around your finger, should be used.

For large resurfacing projects where three or four large plaques are to be resurfaced, it is recommended that an electrical belt sander with an 120 grit emery belt be used.



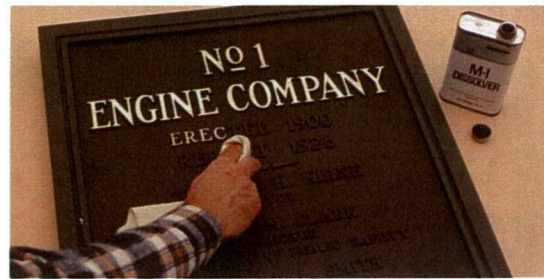
3. Coloring With Oxide Stain

The surface must be dry and free of any loose particles, dirt or oil-like deposits. Patina or natural oxidation need not be removed. Shake the aerosol can until you hear the steel ball moving freely. Reshake lightly from time to time during use.

Spray 4 to 6 inches from the surface in straight slightly overlapping lines. Spray at a moderate speed—about one foot per second.

Cover the entire surface with two or three coats, but do not overuse. Alternate the direction of spray. It is best to spray from all angles so that the coating covers the sides of the raised lettering.

Note: Save enough Oxide Stain for touch-up in case color is accidentally removed in Final Highlighting Step.



4. Final Highlighting

Use absorbent cloth wet with M-1 Dissolver to remove the Oxide Stain and expose the natural bronze color. Wrap cloth around index finger or thumb and carefully wipe the previously highlighted raised surfaces. If background color is accidentally removed, it can be resprayed with remaining oxide stain.



5. Final Finish

The Final Finish is a clear protective coating that seals the surface of the plaque and inhibits oxidation. Spray 4 to 6 inches from surface in straight slightly overlapping lines.

Light passes are recommended, a heavy application will run and dull the gloss. Spray at a moderate pace—about one foot per second. Alternate your direction of spray. It is best to spray from all angles so that the coating covers the sides of the lettering. Apply four coats allowing 30 minutes drying time between applications.

Final Finish may be used to regloss or rebrighen dull finishes.